



# NAUTILUS WATERSUITES

FAQ's 2021

# WHO BUILD THESE CRAFT

# Venturer

Timberwork

The team behind Nautilus Watersuites has created a blackbox approach to every aspect of the design, compliance, detailing and build process. Nautilus access the latest BIM ( Building Information Modelling ) that ensures knowledge transfer is swift and efficient.

This unique IP and process is accessed under licence by designated representatives and builders for local assembly in the final destination country. This approach ensures maximum efficiency, high standards and competitive costs.

The first appointed representative/builder is Singapore headquartered hospitality contractor Venturer Pte Ltd (project examples shown) who built the original Nautilus 55 and numerous iconic resort projects across the Globe. Venturer represent Nautilus Watersuites for Singapore, Maldives and the Caribbean.

Nautilus Watersuites expect to appoint representatives and builders for Australian, US, Asian and Gulf markets.



*Credits: Am-anpuri, Phuket Thailand*



*Ritz Carlton, Fari Islands*



*James Turell Pavilion, Maldives*

# WHO CAN FIT THEM OUT



*"The better make"*

The Nautilus Qualified Vendor Network features the fit-out company "Onestop", who have delivered an impressive array of projects including the Capella, W Hotel, Hilton, Shangri la, Waldorf Astoria, Conrad and many more.

Onestop has coordinated ready-to-go nautical inspired interiors from some of the best brands in the business.

***"At onestop, we understand that a tailored customer-centric service creates industry leaders. We relentlessly ensure that our solutions are made better to create extraordinary memories to last a lifetime"***

[www.onestop.sg](http://www.onestop.sg)





BEYOND THE BUILD, WHAT  
LEVEL OF SERVICE CAN I  
EXPECT:

# THE NAUTILUS TOUCH

## FUSS FREE ENJOYMENT

Service levels are dependent on the programmes established by country representatives. The following are examples offered for Singapore.

Cruising and seamanship knowledge is not necessary. Nautilus can arrange a crew as required, either for dockside entertainment or short journeys typically requiring a licensed captain and one crew.

# THE TEAM

## PRIVATE DINING

Nautilus has partnered with the Sundial Singapore, who are keen to provide bespoke, unparalleled onboard-dining experiences.

[thesundial.space/private-dining](https://thesundial.space/private-dining)

## SPORTS

Nautilus has partnered with Maxout Hydrosports Singapore for wakeboarding and wakesurfing that can be arranged alongside the craft when out at Sea. Sea kayaks can be accommodated on the craft for the enjoyment of all.



Michellin-starred Chef Emmanuel Stroobant on board Nautilus 55'



## HOW IS THE CRAFT MAINTAINED

The envelope: the vessel is designed for minimal maintenance. This is the same approach we take for top class resort buildings, for example all the exposed surfaces use SiOO:x, a Swedish proprietary nanotech silica product which remains maintenance free for 10 years.

The systems: the main propulsion is provided by quiet, clean and efficient high-torque commercial outboards. These are very easy to service and maintain, requiring a service interval of 100 hours. Other systems are modest dependent on final specification, but all selected for easy care and maintenance.

Care and servicing: Nautilus can take on and manage all aspects of the maintenance of the craft, including weekly washing and cleaning inside the craft, minor maintenance works and scheduling routine maintenance for any systems.

A schedule of rates for cleaning and a cost-plus arrangement for maintenance can be agreed at the time of purchase.



SiOO Wood Protection AB are leaders in wood protection using silicon technology to provide a highly effective proven system to protect wood of all types. It gives long life, a beautiful natural surface and is friendly to people and the environment.

# WHAT ARE MY CHOICES

ATTRIBUTES	Yacht	House boat	Floating Home	Waterfront real estate	Nautilus watersuites	NAUTILUS REMARKS
Asset Value	x x x	x x	✓ ✓	✓ ✓	✓	NWS Expected to perform well due to an impressive design life exclusive location and number of craft.
Cost per m <sup>2</sup> space	x x x	x	✓	x	✓ ✓	Cost of hull v cost of land is much lower
Up Keep Cost	x x x	x	✓	✓ ✓	✓	Designed to be low maintenance both hull and superstructure systems
Cost Entry Point	x x x	✓	x	x x	✓	Relatively inexpensive for a premium location
Location Flexibility	✓ ✓ ✓	✓	x x	x x	✓ ✓	NWS can be deployed in 1000's of destination globally and be relocated
Lifestyle Value	✓ ✓ ✓	✓	✓ ✓	x x	✓ ✓ ✓	Not as versatile as a typical yacht however most yachts don't move
Stability	x x	x x x	✓ ✓ ✓	✓ ✓ ✓	✓ ✓	NWS is as close as you can be on dry land
Sustainability	✓	✓	✓	x x x	✓ ✓	No land use, carbon negative superstructure
Potential for ROI	x x x	x	✓	✓	✓	Rentable accomodation or operational charters, events, etc
Uniqueness	✓	✓	✓	✓	✓ ✓ ✓	A new genre

# HOW CAPABLE ARE THESE CRAFT

Despite the appearance of a floating villa, the watersuite is a certified craft rated for operation at sea.

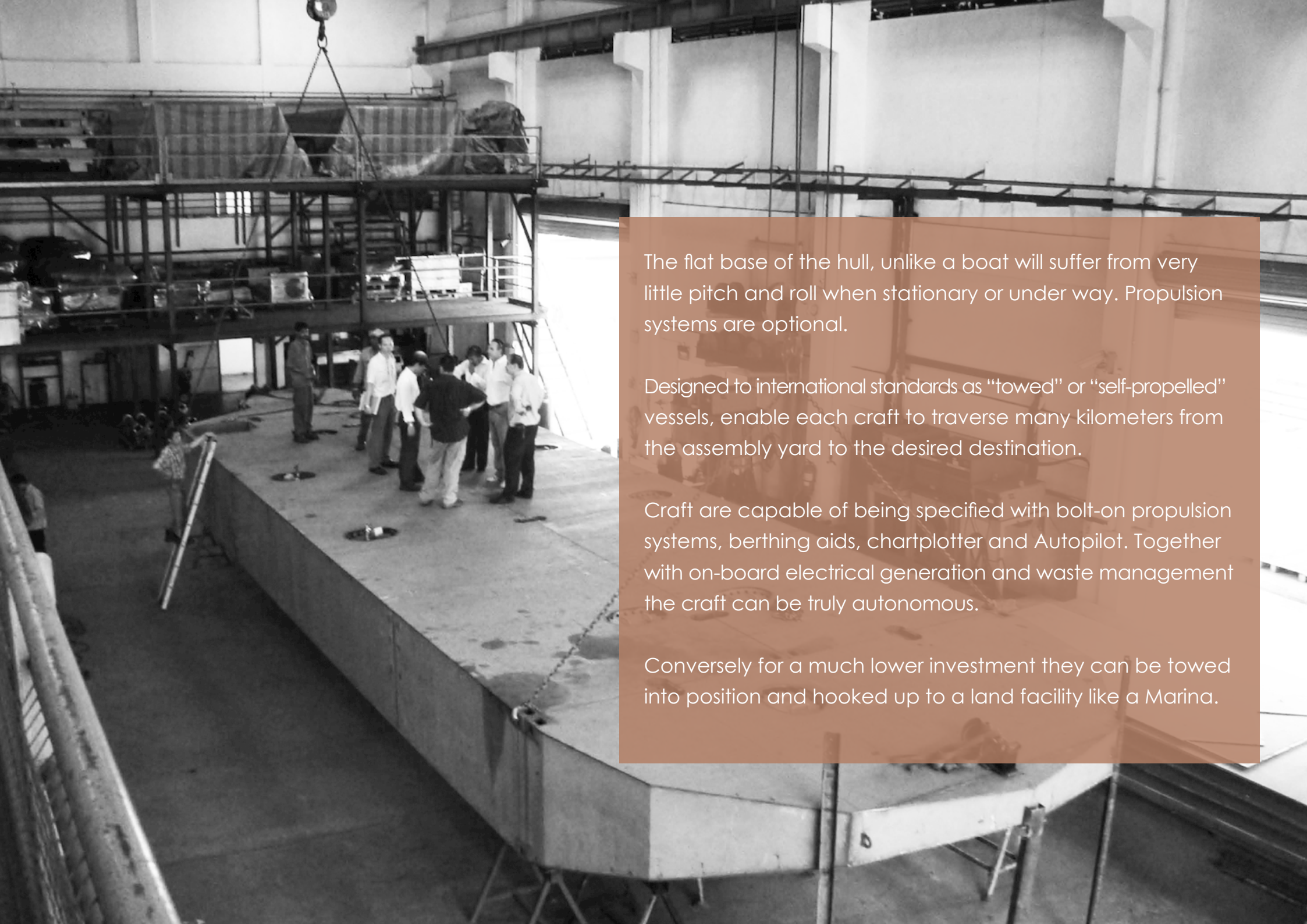
It can be towed to a location or specified as a fully operational, self propelled craft.

Although tall in appearance the majority of the deadweight is located close to the waterline, making for a very stable platform.

This steel modular hull has been proven over a decade and is assembled with a proprietary connector system that has military applications. The hull contains ten independently sealed air-tight compartments. Modelling by *Bureau Veritas* to demonstrates in the unlikely event several compartments are flooded, stability and safety are maintained.







The flat base of the hull, unlike a boat will suffer from very little pitch and roll when stationary or under way. Propulsion systems are optional.

Designed to international standards as “towed” or “self-propelled” vessels, enable each craft to traverse many kilometers from the assembly yard to the desired destination.

Craft are capable of being specified with bolt-on propulsion systems, berthing aids, chartplotter and Autopilot. Together with on-board electrical generation and waste management the craft can be truly autonomous.

Conversely for a much lower investment they can be towed into position and hooked up to a land facility like a Marina.

# A UNIQUE MODULAR SUPPLY AND BUILD PROCESS

Nautilus Watersuites embrace innovative modular building and procurement techniques.

The luxury Watersuite modular flotation, together with the superstructure, is a departure from both traditional building and boat construction techniques. It is a hybrid of both terrestrial and marine architecture. The enclosed modular hull accommodates bolt on, modular structural units for each storey including key mechanical elements with optional customised propulsion options based on intended in-service use.

This modular approach delivers a high degree of value and allows for the greater part of the build to be carried out under factory conditions and in different geographic locations if required. For example hull modules can be fabricated by the marine offshore sector. The large format superstructure components are fabricated by robots in European mass timber factories, the same way we build resort accommodation.

The superstructure is similar to the modern way we now build prefabricated resort buildings, where typically all the large components are off-site factory made for fast clean assembly on site.



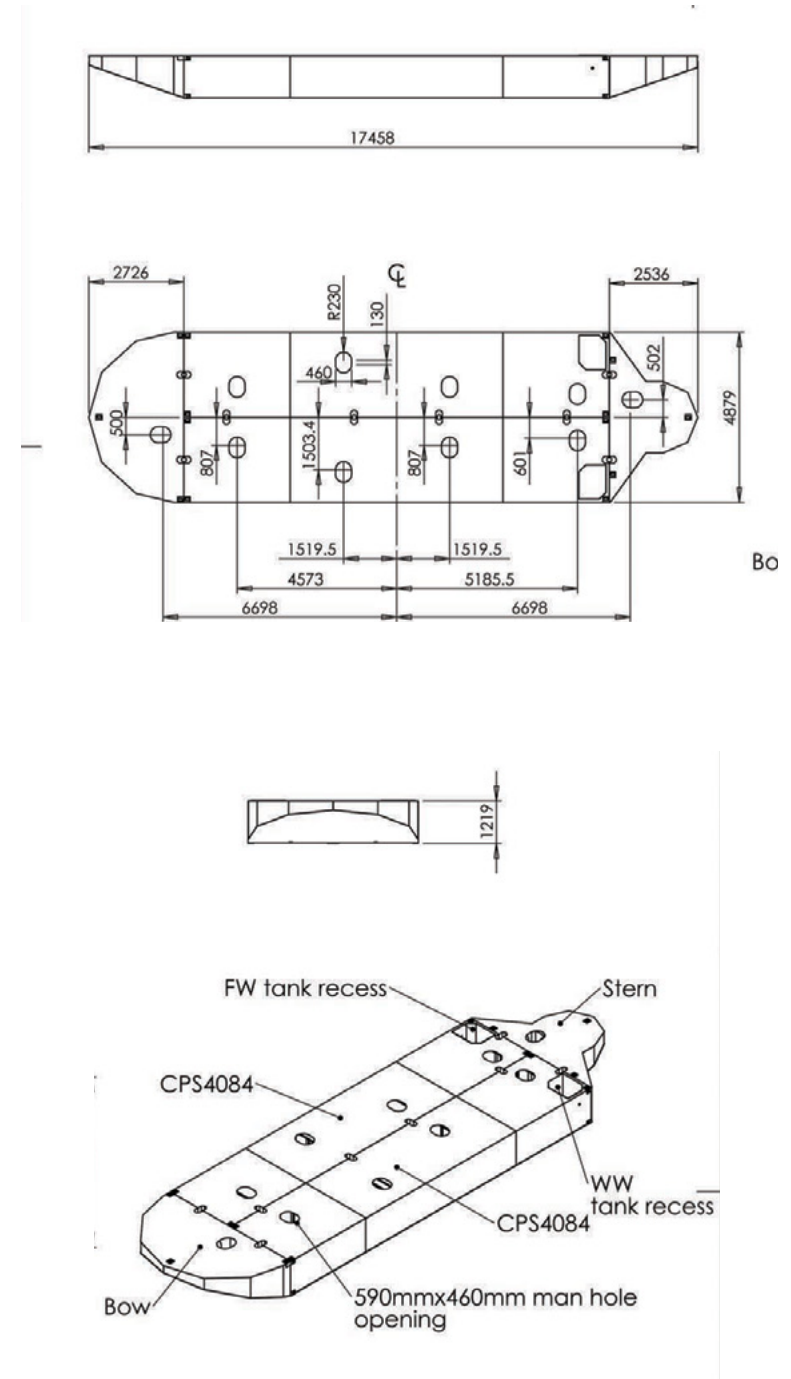
# INTERNATIONAL STANDARDS

The majority of berthing facilities require craft to be built in compliance with international standards. Not only is this a requirement but it also ensures a quality third-party compliant build that can be insured as an asset.

The design and production of the modular hull is compliant with international standards for both "towable or self-propelled" craft. This naval architecture process includes computer based stability analysis, undertaken by specialists, e.g *Bureau Veritas*.

Hulls are manufactured under third-party inspection and testing. All completed craft are subjected to sea trials for performance verification.

The modular superstructure is engineered by a Singapore registered Professional Engineer and duly endorsed fit for purpose. Engineered timber products are stringently tested and rated for an in-service life of 50 years.



# WHAT ARE THE LICENSING REQUIREMENTS



## REGISTRATION

The craft can be internationally flagged, based on its intended use as a pleasure craft.

Another option we recommend is for craft to be foreign flagged. Our first craft (left) is registered under the Small Ships Registry under the UK Maritime and Coastguard Agency (RSS) at a cost of 72 pounds per 5 year term.

An advantage of foreign flagged is that the craft can carry a full complement of guests according to the designer's specifications, ie 30 Pax.

## INSURANCE

Many insurers will offer a comprehensive policy n.e. 1.8% of the insured value p.a.

## FINANCING

Nautilus has a range of financing partners who are able to collateralise the craft as an asset, details available upon request.

## NAUTILUS WATERSUITES

Nautilus Watersuites Pte Ltd  
315 Outram Road #03-07  
Singapore 169074  
nautiluswatersuites.com  
info@nautiluswatersuites.com

Authorised Representative:

**Southeast Asia:**

**Venturer**  
Timberwork

Venturer Pte Ltd  
Kevin Hill - kevin@venturer.biz  
M +65 9625 0215