

NAUTILUS WATERSUITES



Specs 2021

NAUTILUS WATERSUITE 2021

ESCAPE EDITION

GENERAL SPECIFICATIONS

- Application: Powered or towed, certified craft resort accommodation
- Overall Length (L): 17.40m (58 ft)
- Overall Width (W): 5.0m (17ft) or 6.20m (21 ft) with sponsons)
- Overall Height (H): =5.90m (20 ft) (From deck to highest deck)
- Material for superstructure: Mass Engineered Timber (MET) and galvanised steel
- Operational environment: coastal waters wind not exceeding 45 knots & World Meteorological Organization (WMO) Sea State Code 3 (wave height 0.5-1.25m)
- Maximum number of people on board when moored: 30 persons
- Maximum number of guests on board under propulsion: 12 persons

SYSTEM CONFIGURATION

- Full load draft: 0.56m
- Full load displacement: Towed 42 / Propelled 52 Tonnes
- Light ship displacement: Towed 38 / Propelled 48 Tonnes
- Light ship draft: 0.7m
- Minimum freeboard: 0.55m
- Material of enclosed hull: marine grade coated steel
- Number of watertight compartments: Towed 8/ Propelled 10
- Position keeping system: mooring to shore or windlass
- Enclosed modular steel hull components: towed 4 nos, propelled 6 components with permanent lock connectors
- Painting specification: International PU paint 10 years design life
- Lifting capacity: 55 tons
- Lifting points: 4

EQUIPMENT

- Optional 10 KVA Marine genset
- 800 litre black water pump out tank or marine waste treatment plant (4 person occupancy)
- Grey water filters
- Water tank: 2000 litre
- PV solar panels with battery banks and concealed split inverter AC system
- LED lighting throughout
- LED underwater lighting
- Electrical distribution panel and breakers to quality resort specifications.
- 5 person jacuzzi with pump and heater and blower multi split inverter AC to second storey

ENVELOPE

- Solid yellow balau decks
- Thermo D spruce cladding with sioox nano treatment
- Marine grade aluminium glazing system with tempered low-e semi reflective tinted glass
- Hardwood painted bi-fold louvred doors
- Fixed stainless steel balustrades
- Sunscreen mesh to stair tower
- Continuous D fender



OTHER MATERIALS AND FIT OUT FEATURES SUBJECT TO CUSTOM ID:

- Solid teak or engineered wood flooring
- High quality veneered built in fittings
- Retractable TV
- High specification bath fittings and ironmongery
- Island kitchen with cooker and fridges
- Fittings and built in of hardwood joinery and soft fittings for tables, chairs, lounges, banquetts
- High quality sanitary fittings
- Outdoor shower

PROPULSION SYSTEM (NOT APPLICABLE TO TOWED VERSION)

- Expeded 4 to 6 knots cruising speed
- Twin four stroke 175HP high thrust OBM
- Electric bow thruster
- 1000 litres fuel tank

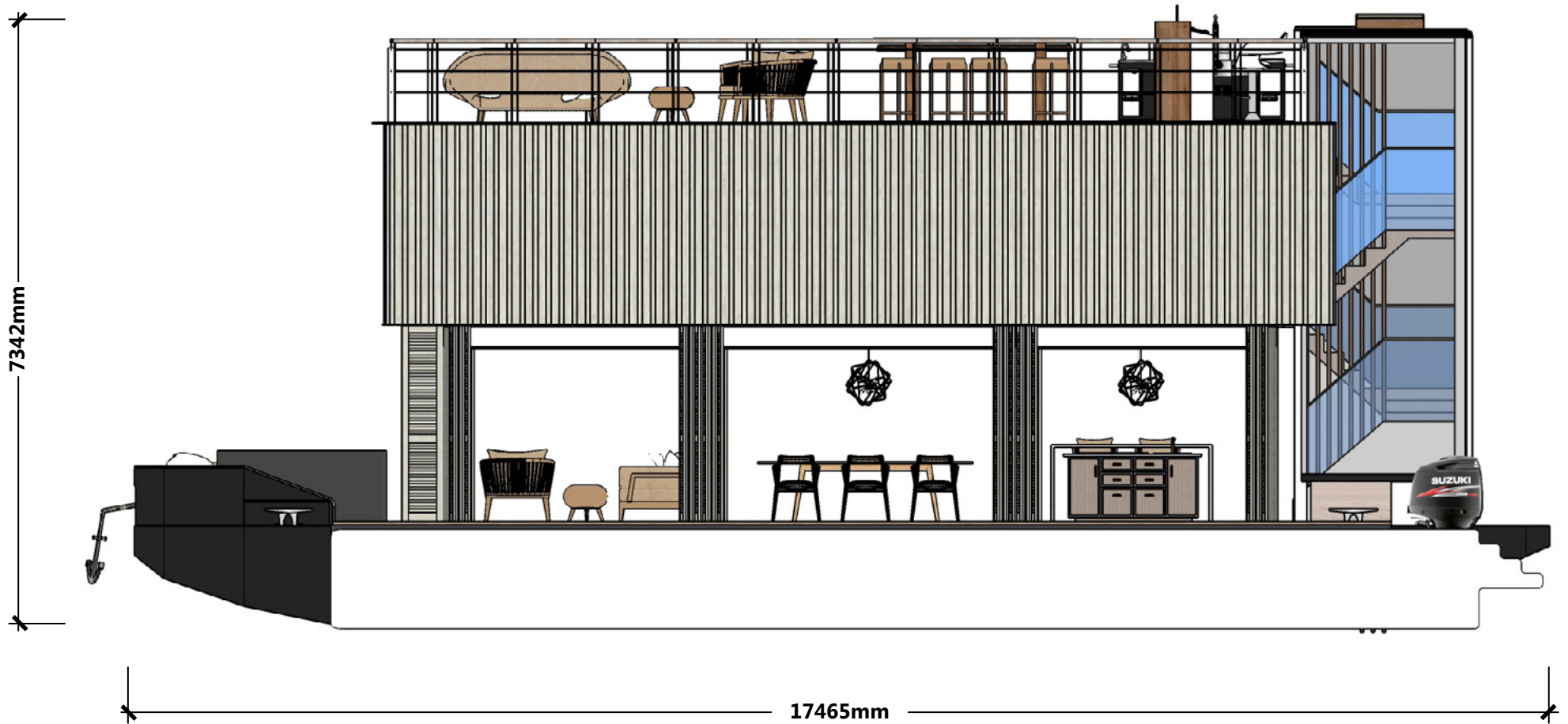
NAVIGATION (NOT APPLICABLE ON TOWED VERSION)

- Remote helm control with warning lights and buzzers
- Navigation lights and equipment
- Marine safety equipment
- Autopilot and GPS with depth sounder
- Vetus windlass with remote controls

PARTICULARS

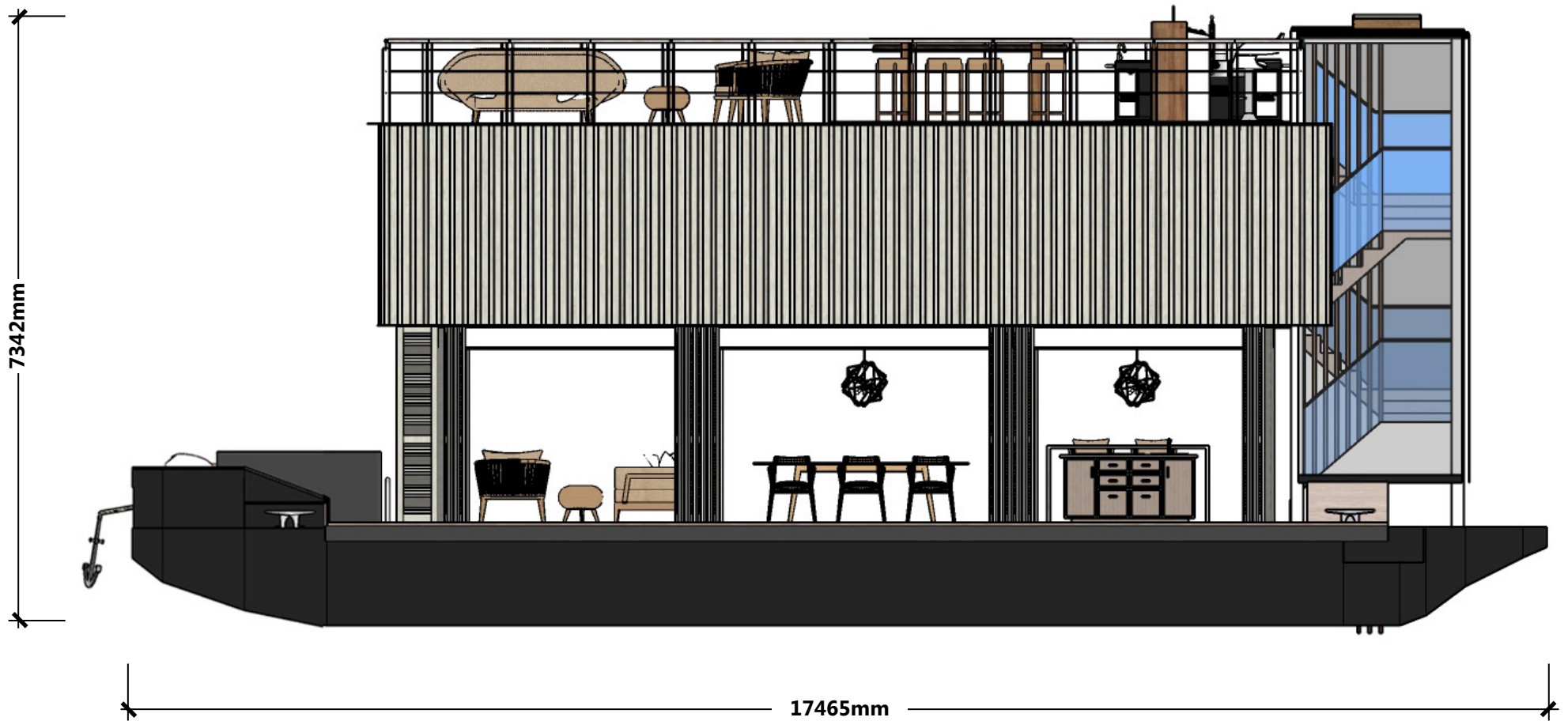
- Total floor space:178 m²
- Designed stability: maximum 30 degree list (commercial vessel standard)
- Operational stability: less than 3 degrees under normal conditions
- Class: Singclass/ ABS
- Survey: Lloyds
- Flagged: Singapore registry of vessels or small ships registry UK
- Insurance offered by: Sompo Insurance Singapore Pte Ltd
- Pre-arranged berthing (2 units): Raffles Marina 10 Tuas West Drive

PROPELLED VERSION



SIDE ELEVATION

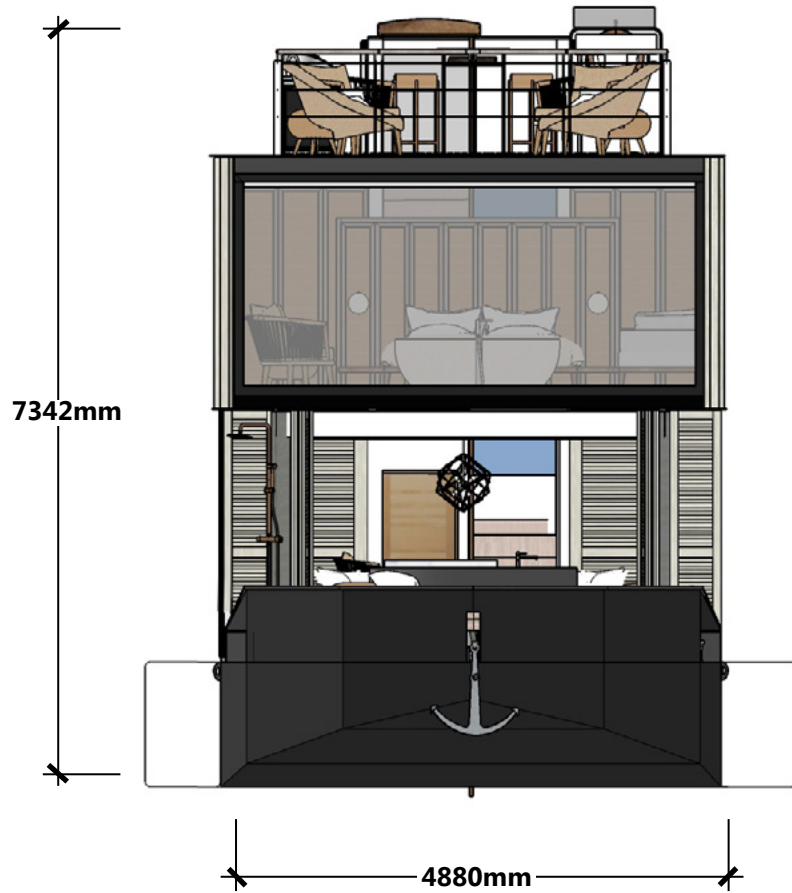
TOWED VERSION



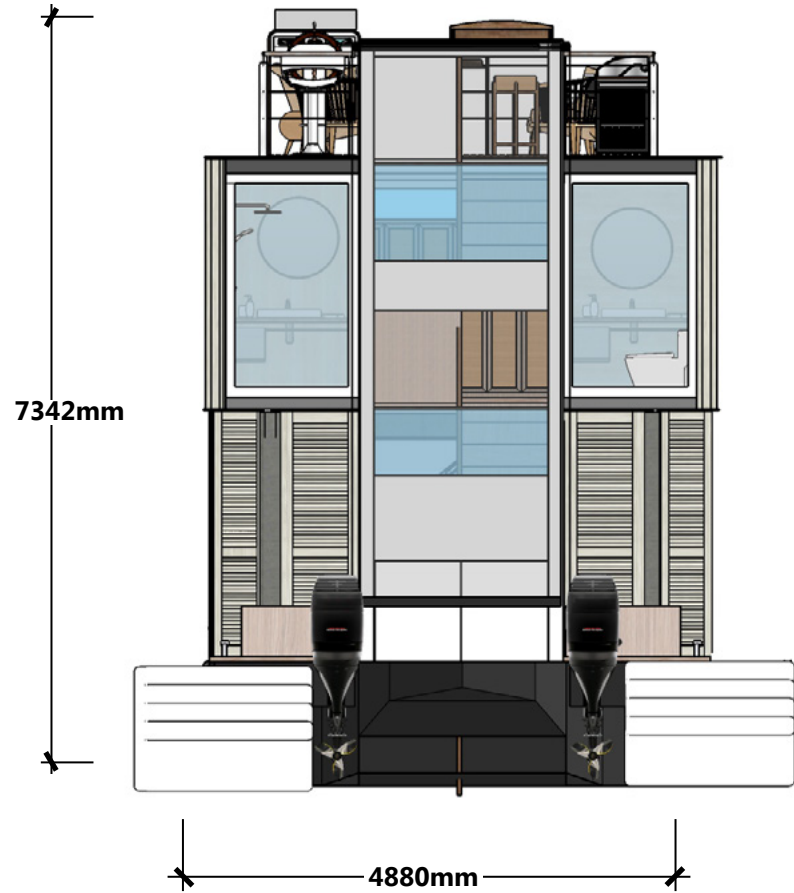
SIDE ELEVATION

NAUTILUS
WATERSUITES

PROPELLED VERSION

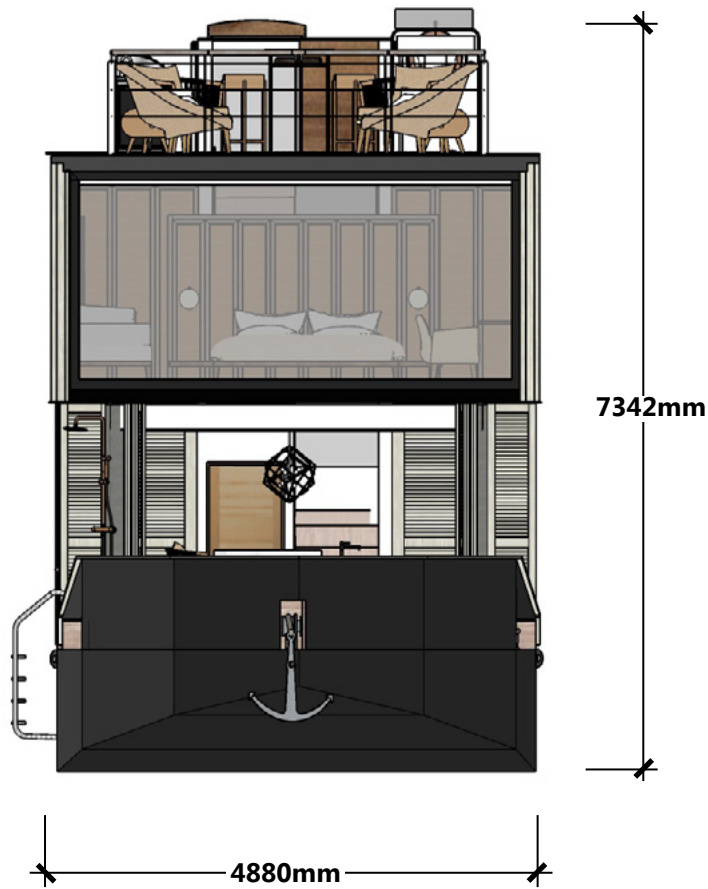


FRONT ELEVATION

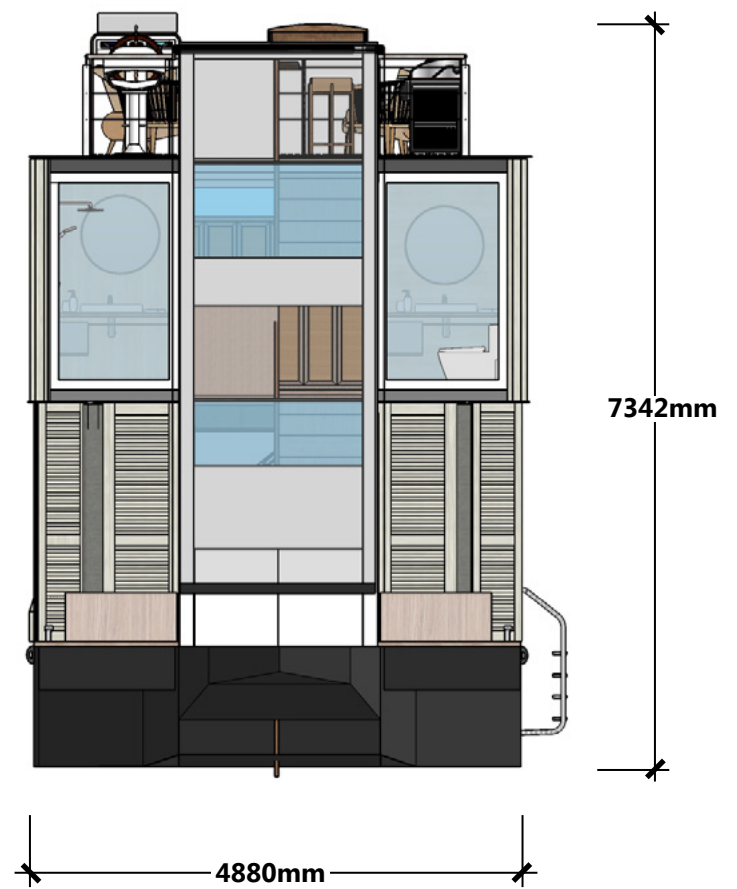


BACK ELEVATION

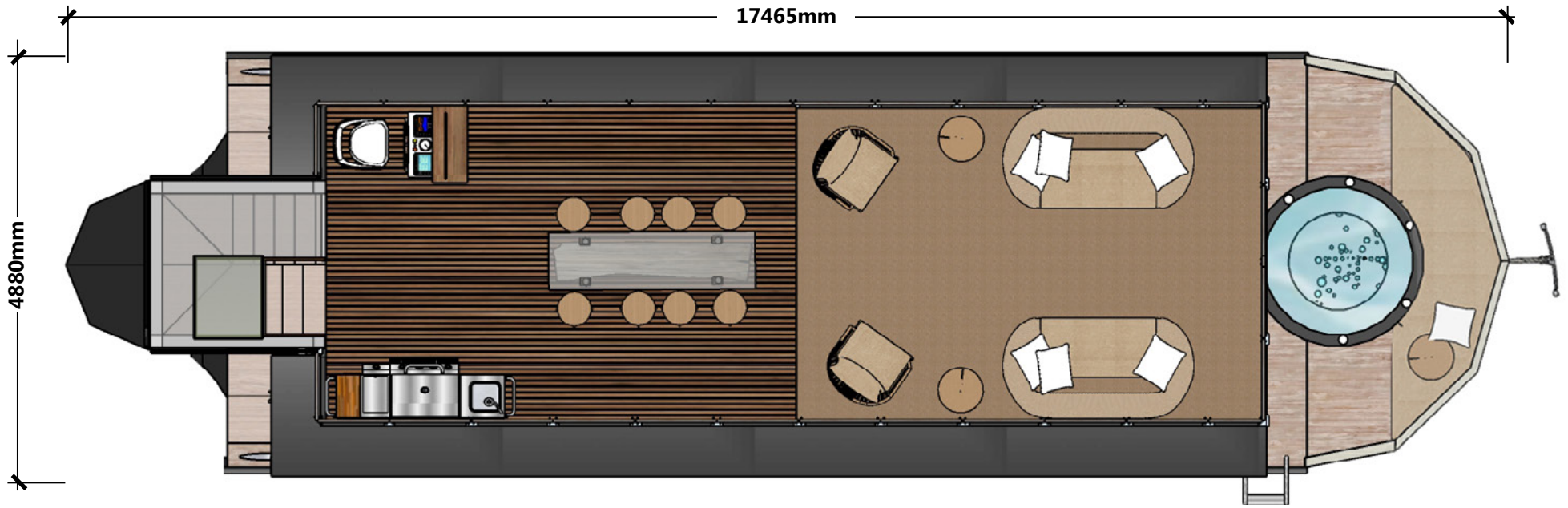
TOWED VERSION



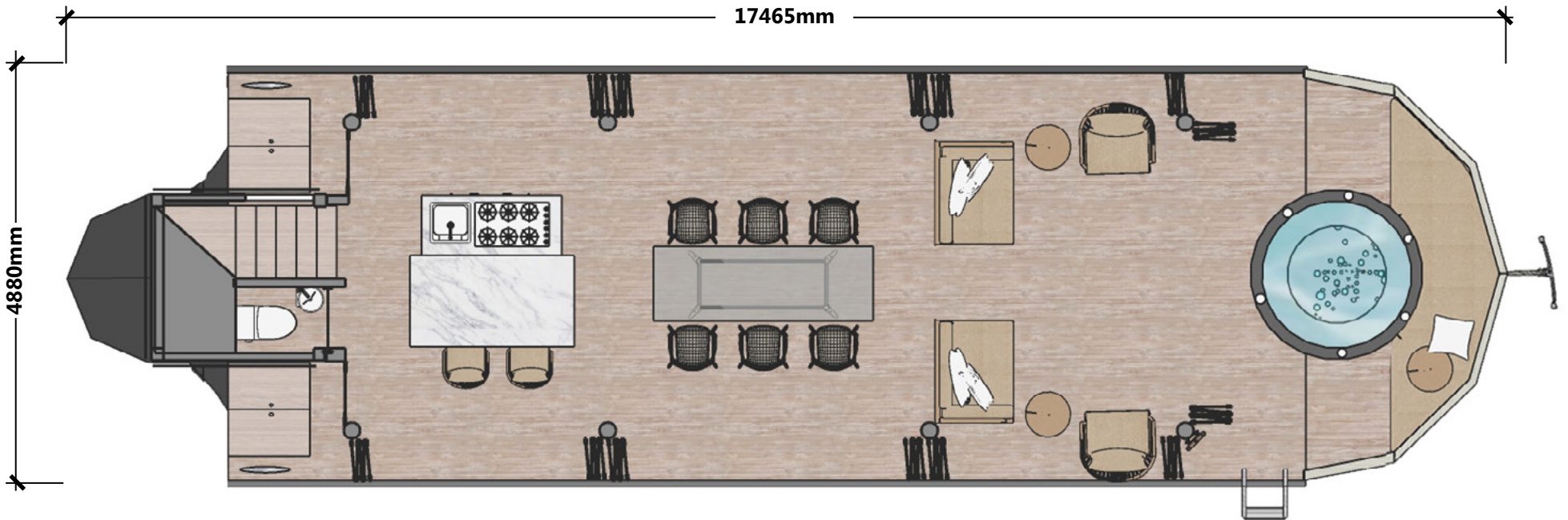
FRONT ELEVATION



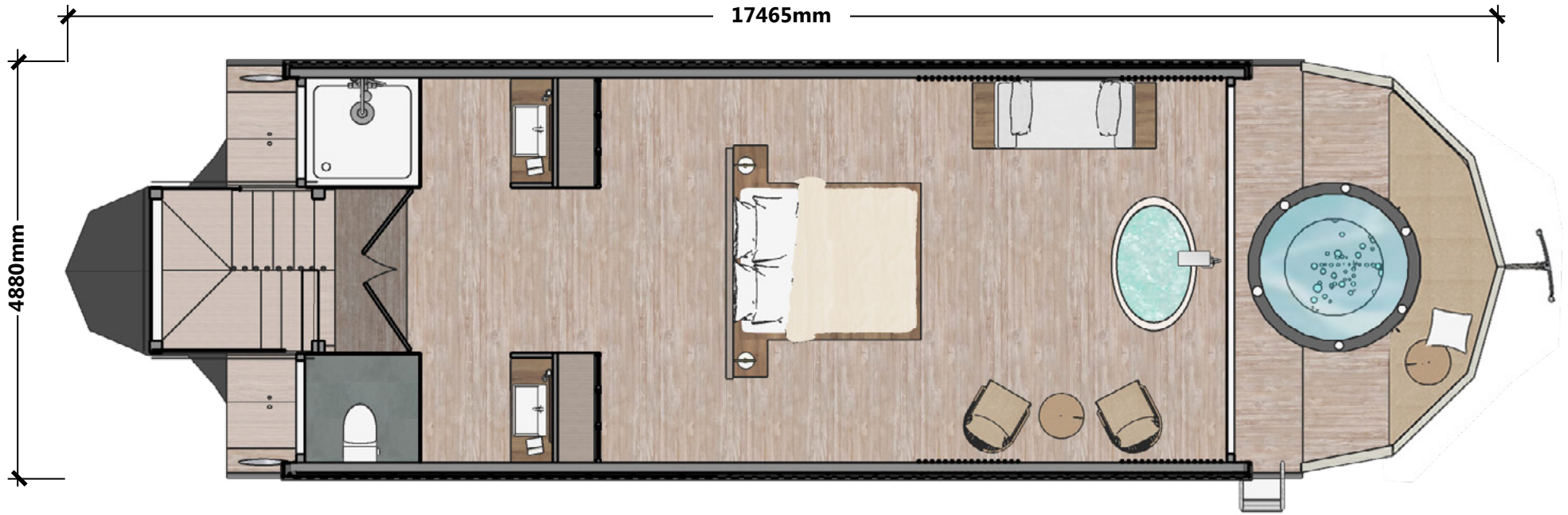
BACK ELEVATION



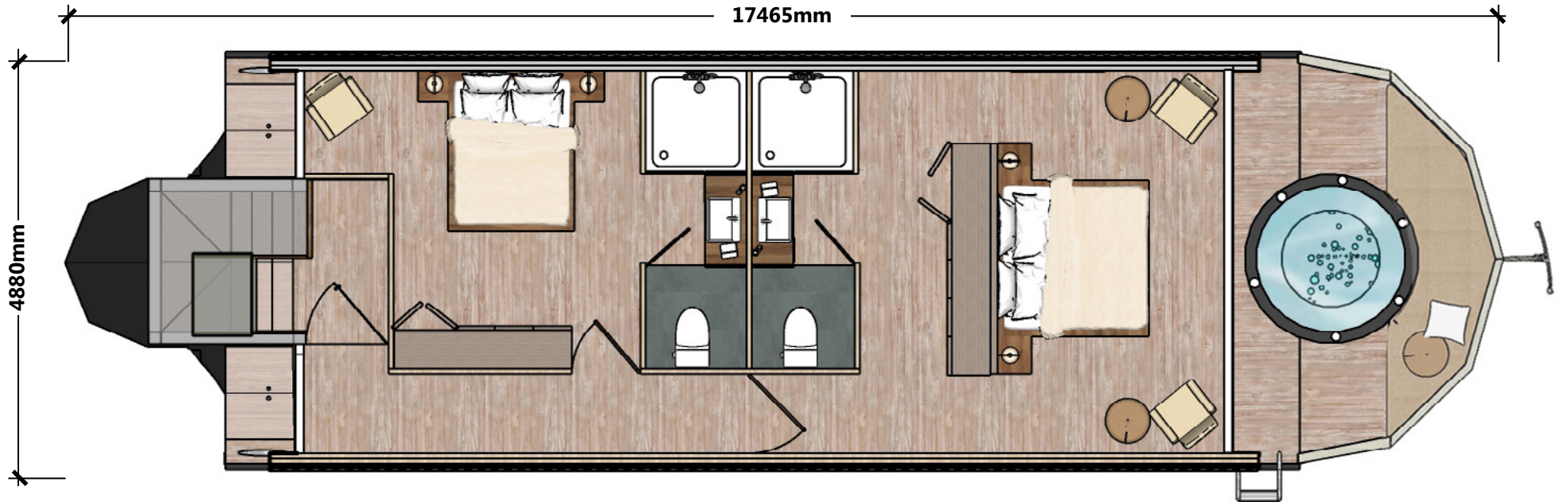
ROOF PLAN



1ST FLOOR PLAN (TOWED)



KING SUITE



KING AND QUEEN COMBO



NAUTILUS
WATERSUITES

NAUTILUS WATERSUITES

Nautilus Watersuites Pte Ltd
315 Outram Road #03-07
Singapore 169074
nautiluswatersuites.com
info@nautiluswatersuites.com

Authorised Representative:

Southeast Asia:

Venturer
Timberwork

Venturer Pte Ltd
Kevin Hill - kevin@venturer.biz
M +65 9625 0215